

# Project Smile


## Increasing the Patient Base through Enhanced Referrals

Project SMILE is a collaboration between the Cabarrus Health Alliance (CHA) and Guilford County Department of Health and Human Services (GCDHHS) to examine mechanisms and approaches to enhance the efficiency and capacity to provide public health dental services across the jurisdictions of Cabarrus County and Guilford County in North Carolina. This exploration of opportunities for cross-jurisdictional sharing (CJS) is funded by a grant from the Robert Wood Johnson Foundation.

One of the objectives of Project Smile is to increase the number of underserved clients receiving care. To achieve this objective, the CJS team analyzed the community need for and management and delivery of dental services provided by the public dental clinics administered by CHA and GCDHHS. Community need for public health safety net dental services was evaluated through dental needs assessment conducted by the GCDHHS epidemiologist on the CJS team. Practice assessment of both programs in relation to Project Smile was completed in August 2013 by chief consultant, Sean Boynes, DMD, MS and lead analyst, Amah Riley, RDH as part of Dental Medicine Consulting (DMC). The practice assessments included an in-depth analysis of dental practice data, followed by site visits.

The dental needs assessment identified substantial unmet need for public health dental services. One of the recommendations that emerged from the dental practice assessment was to increase patient volume through increasing referrals from other public health programs. The CJS teams shared examples of existing referral forms and developed new forms customized for multi-program use. After implementing the new referral process, referrals were tracked and data were pulled for June, 2014, the first full month using the new referral forms, and again in September to assess the effectiveness of the referral process.

The Project Smile cross-jurisdictional team will review the characteristics of dental referrals and the referral process to identify areas where improvements might be made in order to increase referrals and expand the patient base.



1103 West Friendly Ave  
Greensboro, NC 27401  
336-641-3152

501 East Green Drive  
High Point, NC 27260  
336-641-7733

### DENTAL REFERRAL

Name: \_\_\_\_\_ DOB: \_\_/\_\_/\_\_

Call the dental clinic between 8:00 am - 4:45 pm Monday - Friday to make an appointment.

A dental appointment has been made for you.  
Appointment Date: \_\_/\_\_/\_\_ Time: \_\_\_\_\_ am / pm  
Location: \_\_\_\_\_ 1103 W Friendly Ave, Greensboro  
\_\_\_\_\_ 501 E Green Dr, High Point


**Reminders:**

- Arrive 15 minutes early for your appointment.
- Bring your insurance card to all appointments.
- Bring this referral form to your appointment to be eligible for a drawing.
- If you must reschedule, call the office at least 24 hours before your scheduled appointment.
- Good dental health is always a part of good overall health.

Referral Date: \_\_\_\_\_ Made by: \_\_WIC\_\_ Clinic\_\_ Other: \_\_\_\_\_

REC App 5/2014

### REFERRAL FOR DENTAL CARE



Date of Referral: \_\_\_\_\_

Patient Name: \_\_\_\_\_ DOB: \_\_\_\_\_

**Referred By:**

CMC NE Emergency Department

Cabarrus Health Alliance

WIC

Pediatrics

Women's Health

Centering Pregnancy

CC4C / OBCM

Community Health Centers

McGill

Logan

China Grove

School Nurse

Cabarrus County

Kannapolis City

Other \_\_\_\_\_

Please call to schedule your dental appointment.  
Bring this referral when you come.  
**704-920-1070**  
Por favor llame para hacer su cita dental.  
Traiga este referido cuando venga.

Concord Office      Kannapolis Office  
280-110A Concord Parkway, S      300 Mooresville Road  
Concord, NC 28027      Kannapolis, NC 28081  
Phone 704-920-1070 Fax 704-920-1071

Referring signature: \_\_\_\_\_

## Characteristics of Dental Clinic Referral Patients, June and September, 2014

	June	September
<b>Cabarrus County</b>		
	<b>N = 60</b>	<b>N = 62</b>
<u>Sex</u>		
Male	36.7%	33.9%
Female	63.3%	56.5%
		9.7% (Missing)
<u>Race/Ethnicity</u>		
African-American	15.0%	11.3%
White	48.3%	43.5%
Other	1.7%	1.6%
Race Not reported	35.0%	43.5%
Hispanic	35%	51.6%
<u>Age</u>		
Ages 0-9	53.3%	46.8%
Ages 10-19	23.3%	29.0%
Ages 20-39	0.0%	14.5%
Ages 40+	23.3%	9.7%
<b>Guilford County</b>		
	<b>N = 12</b>	<b>N = 29</b>
<u>Sex</u>		
Male	8.3%	13.8%
Female	91.7%	86.2%
<u>Race/Ethnicity</u>		
African-American	41.7%	37.9%
White	16.7%	0.0%
Asian	16.7%	13.8%
Not Reported	8.3%	6.9%
Hispanic	16.7%	41.4%
<u>Age</u>		
Ages 0-9	8.3%	6.9%
Ages 10-19	0.0%	24.1%
Ages 20-30	91.7%	69.0%
Ages 40+	0.0%	0.0%

Source: Cabarrus and Guilford clinic records

- *The percentage of female referral patients was higher than male referrals for Cabarrus clinics and was especially high for Guilford clinics, since referrals to Guilford clinics were largely from the Women's Health and WIC programs.*
- *Of referral race reported in Cabarrus, White patients made up near half of all referrals in June and 53.4% in September. Hispanic referrals increased from a third of referrals in June to over half in September.*
- *In Guilford County, African-American patients made up 41.7% of referrals in June, declining slightly in September. Hispanic referrals increased from 16.7% in June to over 40% in September.*
- *The majority of Cabarrus referrals were under the age of 20 in both time periods, while referrals in Guilford were largely ages 20-30. Guilford County's clinics serve primarily pediatric patients but do provide services for pregnant women, who comprise most of the referrals.*

## Referral and Payment Source, June and September, 2014

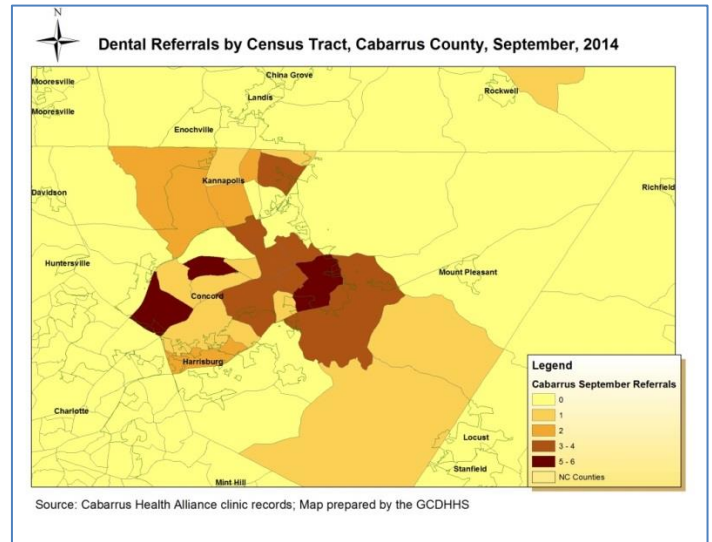
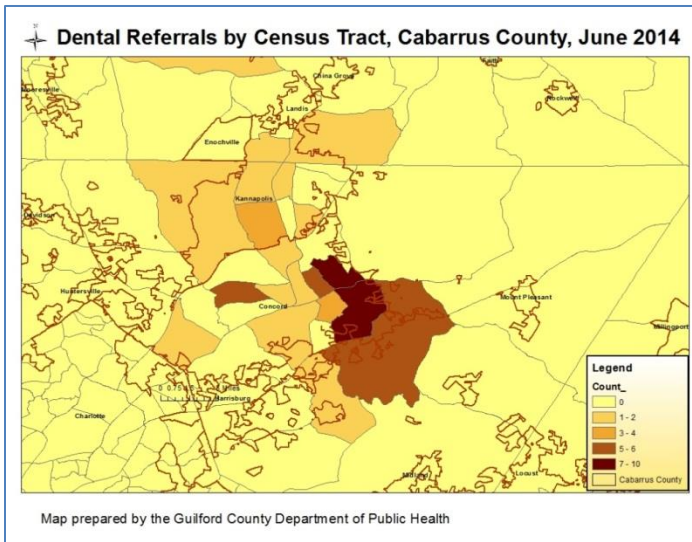
---

	June	September
<b>Cabarrus County</b>		
<u>Payment Source:</u>		
	<b>N = 60</b>	<b>N = 62</b>
Sliding Fee Scale	8.3%	1.6%
Self-Pay	1.7%	3.2%
Private Insurance	11.7%	3.2%
Medicaid Pregnancy	5.0%	0.0%
Medicaid	70.0%	91.9%
Health Choice	3.3%	
<u>Referral Source:</u>		
CHA Employee/Family	36.7%	
CHA Pediatrics	13.3%	24.2%
Department of Social Services (DSS)	16.7%	19.4%
McGill Community Health Center	3.3%	6.5%
School Nurse	1.7%	1.6%
Walk-in	5.0%	
WIC	23.3%	30.6%
CHA Maternity		1.6%
CHA Women's Health		4.8%
Family member		4.8%
Logan Community Health Center		6.5%
<b>Guilford County</b>		
<u>Payment Source:</u>		
	<b>N = 12</b>	<b>N = 29</b>
Self-Pay	8.3%	24.1%
Medicaid	91.7%	75.9%
<u>Referral Source:</u>		
WIC	8.3%	3.4%
Women's Health	91.7%	65.5%
Other		31.0

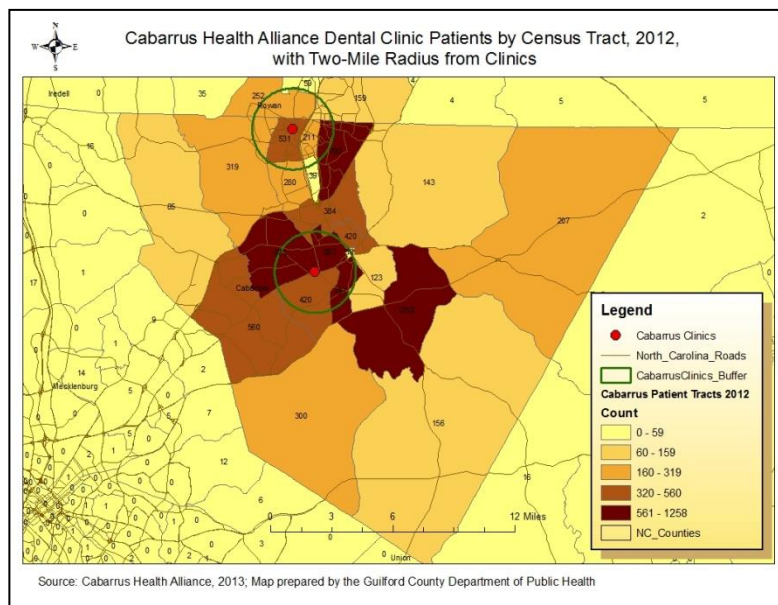
Source: Cabarrus Health Alliance and Guilford County DHHS clinic records

- *In Guilford County patients with Medicaid made up the large majority of referral patients, with self-pay patients increasing from less than 10% of referrals in June to almost a quarter of patients in September.*
- *Medicaid patients also made up the large majority of referrals in Cabarrus, with a mix of other payment sources.*
- *Cabarrus county referrals came from numerous programs in June and September.*
- *The primary referral source in Guilford County was the Women's Health program.*

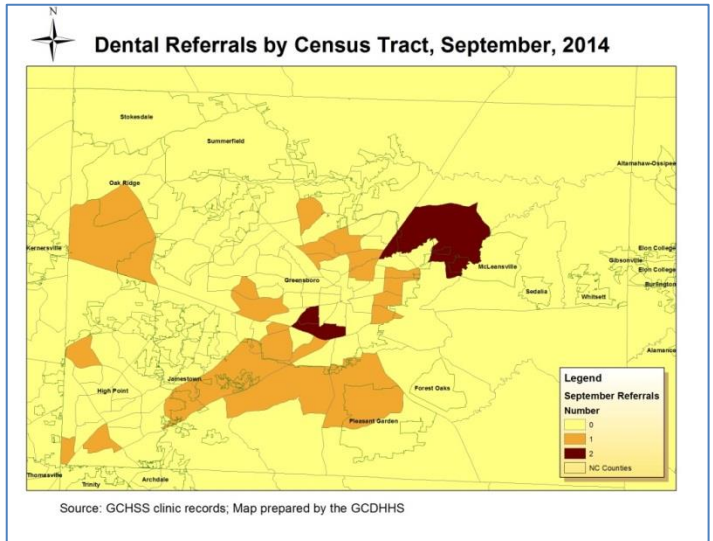
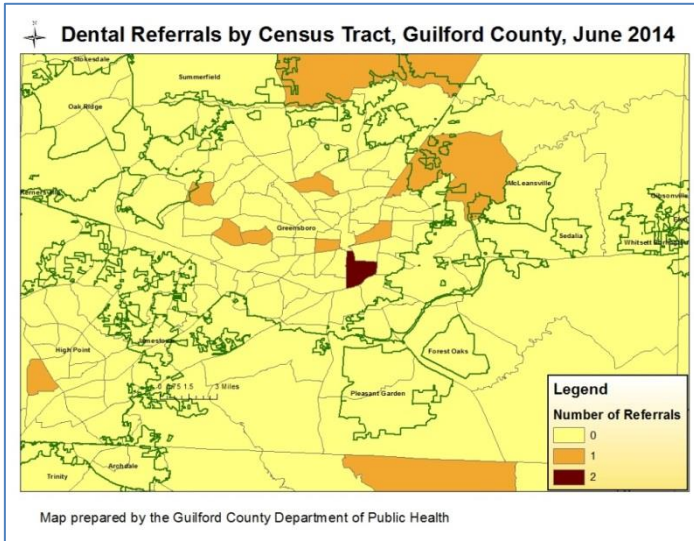
## Geographic Distribution of Referrals, Cabarrus County, June and September, 2014



- *June referrals in Cabarrus were concentrated in eastern Concord area census tracts.*
- *September referrals were more widely distributed, with more referrals in west Concord and Kannapolis.*
- *Compared to the residential distribution of dental clinic patients in 2012, referrals were less likely to live in the Kannapolis area.*



# Geographic Distribution of Referrals, Guilford County, June and September, 2014



- *Guilford dental clinic referrals were widely distributed in June, with the largest number in SE Greensboro.*
- *September saw a greater geographic spread of referrals, building on core areas of referrals.*
- *In general, geographic referral patterns were similar to the geographic distribution of 2012 Chandler clinic patients in Greensboro; however, fewer referrals were from residents of the High Point area.*

