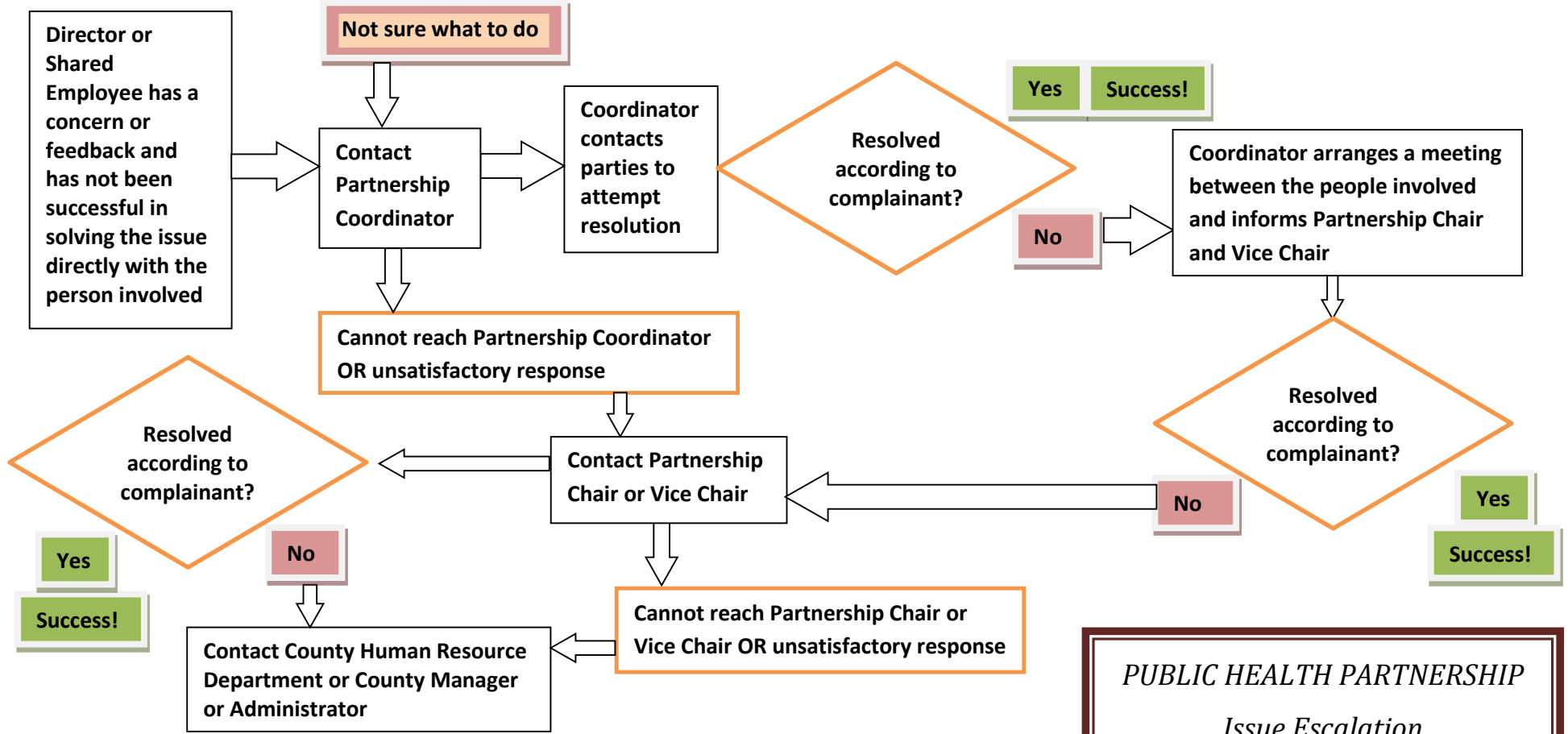


San Luis Valley Public Health Partnership HUMAN RESOURCES ISSUE ESCALATION GUIDANCE

NOTE: any steps can be skipped to directly approach Partnership Chairs, or employee's supervisor or HR representative
Concerns regarding a shared employee: see employee's direct supervisor or human resources in employee's county



PUBLIC HEALTH PARTNERSHIP
Issue Escalation
November 2015

PARTNER OBVIOUS LACK OF PARTICIPATION:

DEFINITION: County PH Director fails to participate in two consecutive meetings without communicating to Chair or Coordinator

