

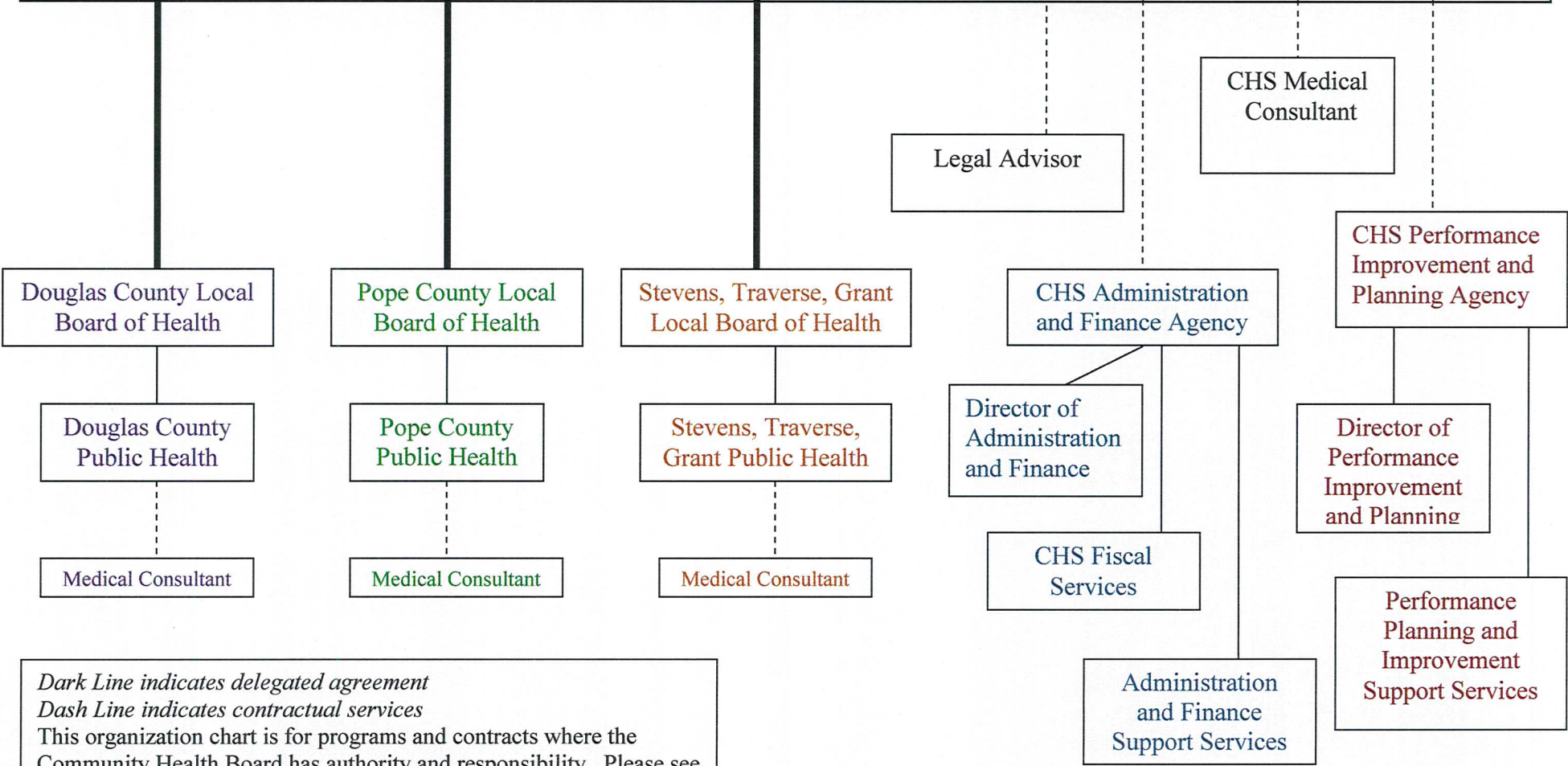
*The Constituents of Douglas, Grant, Pope, Stevens and Traverse Counties*

Douglas County

Pope County

Stevens, Traverse, Grant Joint Powers Authority

**Horizon Community Health Board**



*Dark Line indicates delegated agreement*  
*Dash Line indicates contractual services*  
 This organization chart is for programs and contracts where the Community Health Board has authority and responsibility. Please see Joint Powers Agreement and Delegation Agreements .