



# Resources to Assist with CJS Arrangements

The Center for Sharing Public Health Services has resources available to assist public health officials and policymakers as they consider and adopt CJS approaches. Some are listed here. Many more are available on our website at <http://phsharing.org/>.

## What is CJS?

Cross-jurisdictional sharing (CJS) is the deliberate exercise of public authority to enable collaboration across jurisdictional boundaries to deliver essential public health services.

## A Roadmap to Develop CJS Initiatives

The *Roadmap* guides readers chronologically through three distinct phases of CJS. Along the way, it provides a broad range of topics to address and poses specific questions to answer. The *Roadmap* also offers links to a host of tools and resources to further facilitate the work. Find the *Roadmap* online at <http://phsharing.org/Roadmap>.

## Determining and Distributing Costs of Shared Public Health Services

This guide helps identify all costs associated with a shared service and presents options for allocating the costs across all jurisdictions participating in a CJS arrangement. (Please note: this resource is not designed to take the place of accountant services.) Find this publication online at <http://phsharing.org/Costs>.

## Guide for Developing Legal Documents Governing CJS Arrangements

Prepared in collaboration with the Network for Public Health Law, this guide offers a checklist of items specific to CJS agreements to be considered for inclusion in any legal agreements that govern CJS arrangements. (Please note: this guide is not designed to replace the need for legal counsel in the development and implementation of a complete legal agreement.) Find this guide online at <http://phsharing.org/LegalChecklist>.

## Success Factors in CJS Arrangements

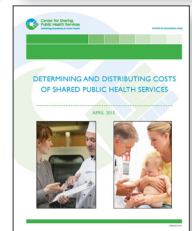
This document describes several factors that can increase the likelihood that a CJS arrangement will be successful. This publication is available online at <http://phsharing.org/SuccessFactors>.

## Spectrum of CJS Arrangements

The *Spectrum* identifies four main types of CJS arrangements. Moving from left to right along the *Spectrum*, the level of service integration increases, the level of jurisdictional autonomy decreases, and implementation becomes more complex, as can governance. This publication is available online at <http://phsharing.org/Spectrum>.

## COMPASS: Comprehensive Assistance for Shared Services

COMPASS provides access to tools, methods, and models to help you explore, prepare for, plan, implement, and improve a CJS arrangement. These steps along the *Roadmap* help guide public health agencies and policymakers as they consider and adopt CJS approaches. Find COMPASS online at <https://COMPASS.phsharing.org>.



---

## Consultation

Center staff also provides phone consultation and other forms of technical assistance, usually free of charge. Request assistance by filling out our *Request Form* at <http://phsharing.org/technical-assistance-request-form/>. For more information about consultation services, email [phsharing@khi.org](mailto:phsharing@khi.org) or call toll-free 1-855-476-3671.

## Assessment Tools

The Center offers several assessment tools for jurisdictions considering or adopting CJS arrangements.

These tools can be found online at [http://phsharing.org/assessment\\_tools](http://phsharing.org/assessment_tools).

**CJS Agreements Collaborative Trust Scale** – This anonymously collected survey assesses levels of trust between partner organizations. It can make discussions about trust safer and more productive. The survey is a useful tool to help people explore their differing expectations and build stronger and more productive collaborative relationships.

**Existing Services** – This self-administered survey is designed to help officials gain a more complete understanding of existing public health services offered by a public health agency.

**Existing CJS Arrangements: Abbreviated Survey** – This self-

administered survey is designed to give potential CJS partners an overview of existing shared service arrangements.

**Existing CJS Arrangements: Detailed Survey** – This self-administered survey is designed to give potential CJS partners a detailed and specific understanding of existing shared service arrangements.

**One Existing CJS Arrangement** – This self-administered survey is designed to help current or potential CJS partners gain a clear definition and better understanding of one current or planned shared service arrangement.

**Self-Assessment of Progress Along the CJS Roadmap** – This self-administered survey is designed to help current or potential CJS partners better understand the extent to which important issues that can affect the success of a CJS initiative have been identified and discussed. The survey components closely mirror the structure of the *Roadmap*.

## CJS Resource Library

For more resources on cross-jurisdictional sharing, visit the CJS Resource Library on the Center's website.

The library contains hundreds of publications from many organizations and authors interested in CJS. It features best practices, lessons learned and

tools to assist jurisdictions that are considering or adopting CJS arrangements.

While most tools and resources in the library primarily focus on public health CJS, some address public sector CJS more broadly.

Many of the resources are linked to specific areas and issues on the Center's *Roadmap to Develop Cross-Jurisdictional Sharing Initiatives*, thus allowing *Roadmap* users to easily find more in-depth information. The *Roadmap* can be found online at <http://phsharing.org/Roadmap>.

In addition, every resource in the library is assigned to one or more of the following topical areas:

- Accreditation / Essential Services
- Background / History
- Change Management
- Communications
- Consolidation of Services
- Environmental Issues
- Fiscal and Service Issues
- Governance
- Legal Issues
- Legal Sharing Agreements
- Monitoring and Improving
- Preparedness / Emergency Response
- Quality Improvement
- Regionalization
- Research and Evaluation
- Rural / Small Jurisdictions
- Surveillance / Data Sharing
- Survey Instruments
- Tribal Issues

Find the resource library online at <http://phsharing.org/cjs-resource-library/>.

---

### CENTER FOR SHARING PUBLIC HEALTH SERVICES

*The Center for Sharing Public Health Services helps communities learn how to work across jurisdictional boundaries to deliver essential public health services. The Center serves as a national resource on cross-jurisdictional sharing (CJS), building the evidence and producing and disseminating tools, methods and models to assist public health agencies and policymakers as they consider and adopt CJS approaches. The Center is funded by the Robert Wood Johnson Foundation and is managed by the Kansas Health Institute. Copyright© Center for Sharing Public Health Services, 2017. Materials may be reprinted with written permission.*

212 SW Eighth Avenue, Suite 300 Topeka, Kansas 66603-3936 Telephone (855) 476-3671 Email [phsharing@khi.org](mailto:phsharing@khi.org) [www.phsharing.org](http://www.phsharing.org)